



Accelerating access to research in a global pandemic – a funder view

OA Belgium: Open Science Accelerating? COVID 19 examples
22 October 2020

David Carr

Programme Manager - Open Research, The Wellcome Trust

d.carr@wellcome.ac.uk

ORCID: 0000-0003-1435-307X



Wellcome's commitment to Open Research

- Wellcome is a global charitable foundation – we support science to solve the urgent health challenges facing everyone
- we want research outputs (including publications, data, software and materials) to be accessed and used in ways that maximise benefit to health & society
- we are a passionate champion and advocate of open access and data sharing, with long-standing policies in place



Our vision for Open Research

“A world where there are transformative improvements in human health because research outputs are managed, shared, and used in ways that unleash their full value”

Open Research team – our work



Developing major initiatives to support the community and drive change.



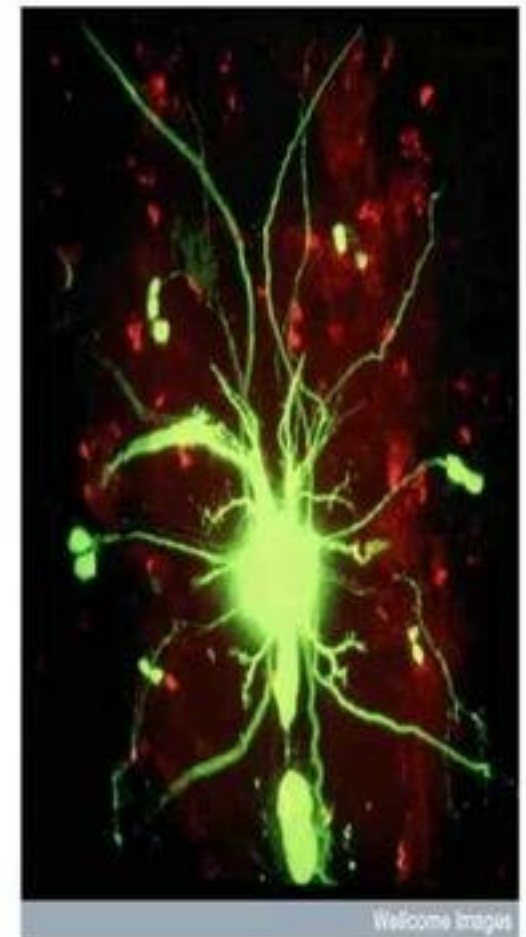
Supporting researchers to develop cutting edge approaches to openness.



Leading in development of policies and practices to support, incentivize, and sustain open research.

Open Research at Wellcome – some current highlights

- working with our partners in [Coalition S](#) to drive immediate open access to research articles
- developing the [Wellcome Open Research](#) publishing platform to enable rapid and open dissemination of results
- funding innovative projects to advance open research - including through the [Open Research Fund](#)
- supporting adoption of the FAIR principles – including through the [FAIRware](#) project
- Working with research institutions to support researchers in developing [output management plans](#) and implementing [responsible and fair approaches for research assessment](#)



Wellcome Images

Our policies

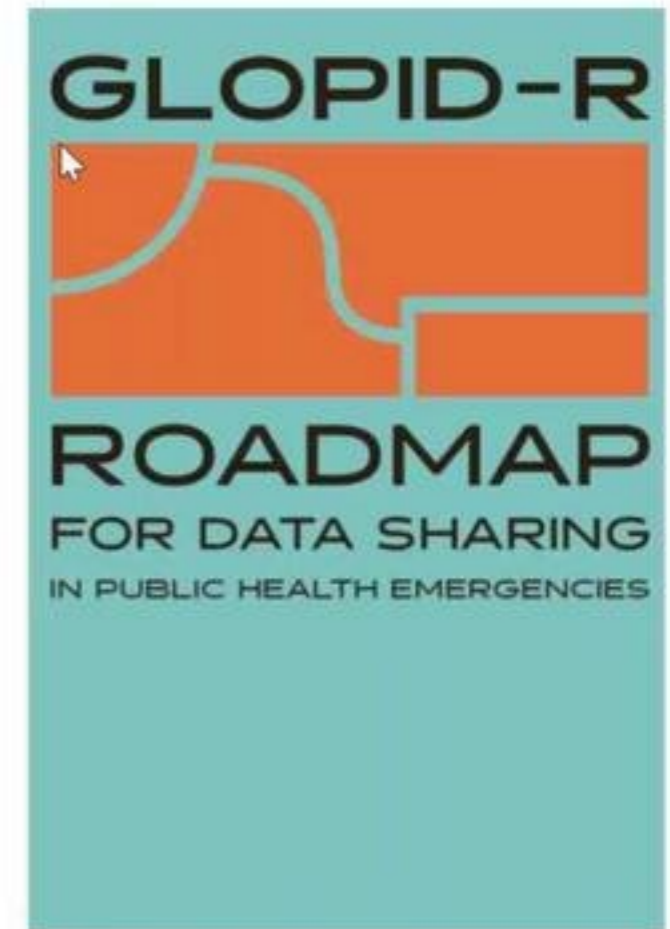
- Open Access to research articles ([link](#))
 - **Current** - All funded articles made open access within six months of publication via Europe PMC
 - **From 1 Jan 2021** – immediate open access upon publication, CC-BY licence
- Availability of data, software and materials ([link](#))
 - Outputs managed and shared in a way that maximises health benefit
 - Data and software underlying publications must be made accessible upon publication
 - Require outputs management plan from grant applicants on how outputs will be shared



**Accelerating access to
data and findings in a
public health emergency**

Emerging consensus on access to research in emergencies (2016-19)

- Joint statement on data sharing in zika and other public health emergencies (Feb 2016)
- In 2017, Wellcome introduced heightened expectations for sharing data and findings public health emergencies in our [data, software and materials management and sharing policy](#)
- The cross-funder [GLOPID-R data sharing working group](#) developed principles (2018) and a broader roadmap for data sharing in public health emergencies (2019)



<https://www.glopid-r.org/wp-content/uploads/2019/08/glopid-r-roadmap-for-data-sharing.pdf>

GLOPID-R principles on data sharing in public health emergencies



Data made available according to the following key principles:



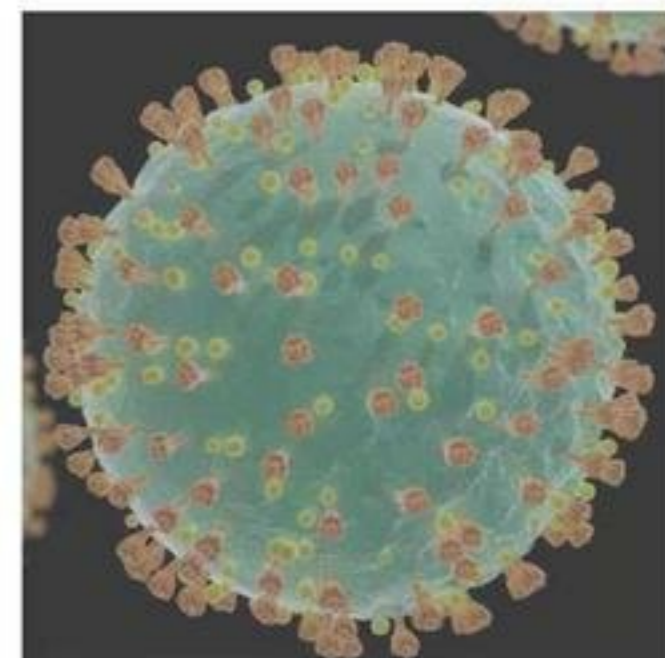
Rapid access to research relevant to COVID-19 – joint statement (Jan 2020)

In Jan 2020, Wellcome coordinated a [joint statement](#) on sharing research data and findings relevant to the novel coronavirus (COVID-19) outbreak:

- all peer-reviewed relevant research publications made immediately open access, or freely available at least for the duration of the outbreak
- research findings relevant to the outbreak are shared immediately with the WHO upon journal submission
- research findings made available via preprint servers before journal publication, or via platforms that make papers open before peer review, with clear statements regarding the availability of underlying data
- interim and final research data relating to the outbreak, shared as rapidly and widely as possible

Joint statement – response and follow-up

- as of late Oct 2020, over 150 organisations had signed up to the statement
- we worked with OSTP & NLM on a follow up statement with publishers (Mar 2020), committing to make COVID-19 content freely accessible and re-usable via PMC
- we have introduced special conditions and processes for our dedicated COVID-19 funding initiatives – including enhanced review of output management plans
- we are working with others to enable sharing and re-use of data and findings:
 - International COVID-19 Data Research Alliance & Workbench
 - supporting Europe PMC to index COVID-19 pre-prints.



By Felipe Esquivel Reed - Own work,
CC BY-SA 4.0,
<https://commons.wikimedia.org/w/index.php?curid=87846813>

Provisions for COVID-19 awards

1. Research findings made available on platforms that make articles openly accessible before peer review and where peer review is conducted on the platform (such as [Wellcome Open Research](#)); or published on a preprint server prior to submission to a journal.
2. Research findings that are submitted to journals are made openly available at the time of publication with a Creative Commons Attribution licence (CCBY)
3. All submissions (to platforms, preprint servers and journals) must include clear statements regarding the availability of underlying data and/or software/code
4. Interim and final data is shared as rapidly and openly as possible – as soon as it is appropriately quality assured, in line with any ethics requirements and irrespective of the timing of journal publication

Accelerating the transition to open science – some thoughts

- COVID-19 has clearly illustrated the importance of open and rapid access to research findings and data (and availability of data and software underlying published research findings)
- It has led to a rapid uptake in the use of pre-prints, and focused the efforts of funders and institutions in promoting open practices (e.g. FAIR principles)
- As a funder, we are actively considering:
 - How we can evaluate key lessons from principles and practices introduced for COVID-19
 - How we can utilise our COVID-19 funding to pilot approaches to incentivise and support open practices
 - How we can roll-out approaches introduced for COVID to our wider portfolio of funded research

Any Questions?

d.carr@wellcome.ac.uk